

# Charminglite

## S Shape Flexible LED Strip



- \*Create any shape without connections or soldering just by bending and folding the tape at any place
- \*S shape design, horizontal bending for sign lighting or other special place
- \*Available in color temperature from 2000-6500K
- \*Easy to form letters or shapes in minutes
- \*LED flexi-strip with 3M self-adhesive tape
- \*SDCM<3, CRI>90/95 version is available
- \*PCB can be special customized

RGB



CCT: 2700K-6500K

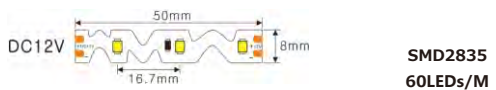
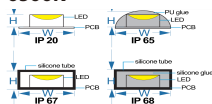
CRI: >80/90



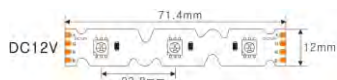
CE

RoHS

ErP



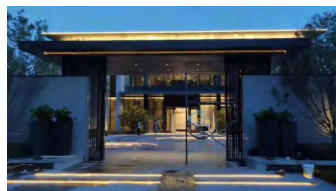
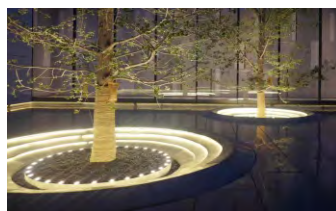
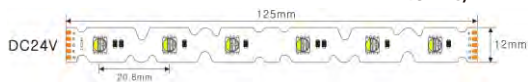
**SMD2835**  
**60LEDs/M**



**RGB**  
**SMD5050**  
**42LEDs/M**



**RGBW**  
**SMD5050**  
**48LEDs/M**



Application

Part No.	Voltage	Wattage	PCB Width	LED Qty/M	Cutting Intervals	Color Temp.	Light Output @6500K IP20	CRI	Standard Length
CL-LS2835-60S	12/24V DC	4.8W/M	8MM	60LEDs/M	50mm(12V) 100mm(24V)	2700/3000/4000 /5000/6500K	390LM/M	80/90	5 Meters/Reel
CL-LS5050-42RGBS	12V DC	10W/M	12MM	42LEDs/M	71.4mm(12V)	RGB	N/A	N/A	5 Meters/Reel
CL-LS5050-48-RGBWS	12/24V DC	14.4W/M	12MM	48LEDs/M	62.5mm(12V) 125mm(24V)	RGBW 4 IN 1+ 3000/4000/6500K	700LM/M	N/A	5 Meters/Reel